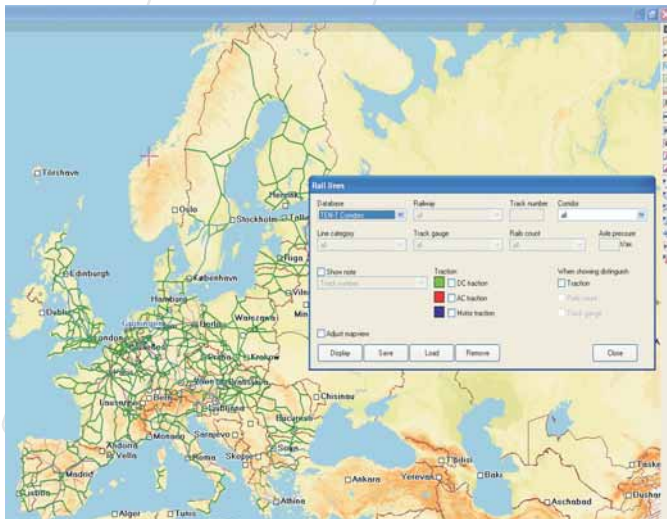


NEWS

RailMap Desktop

- New version of map base, panning enabled
- Actualization of road layer
- Actualization of railway layer
- Railway corridors: RNE, TEN-T



- Infrastructure covering all Europe. In 2009 and 2010 infrastructure layer was processed in these countries: Norway, Sweden, Finland, Italy, Albania, Bosnia and Herzegovina, Bulgaria, Montenegro, Denmark, France, Croatia, Ireland, Macedonia, Netherlands, Portugal, Romania, Greece, Serbia, Spain, Turkey, Estonia, Latvia, Lithuania, Moldavia.



RailMap.Net

New Web Application

Basic map application that contains following layers:

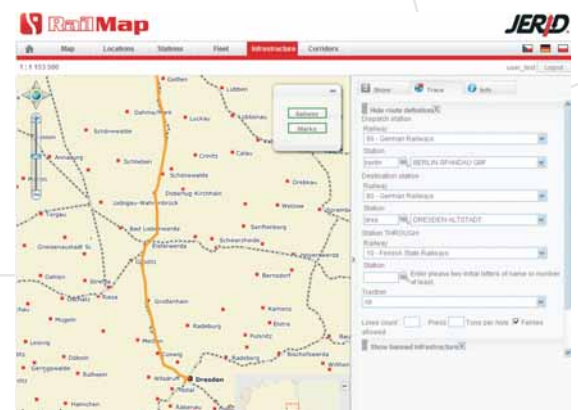
- Railway layer with possibility to turn on and turn off the layer
- Layer of railway stations with possibility to turn on and turn off the layer
- Infrastructure layer with infrastructure parameters, whole Europe covered
- Static layer of towns
- States frontiers

Application is localized in following languages: English, German, Polish, Czech.



Functions:

- **LOCATIONS:** enable to search arbitrary place and display it on the map
- **STATIONS:** enable to search any European station according to a name or a number
- **FLEET:** tracking of wagons by means of monitoring unit, tracking of wagons in CIS territory, wagons movement history, possibility to export positions to .xml or .csv
- **INFRASTRUCTURE:** searching of arbitrary railway trace according to infrastructure parameters, display of trace on the map, parameters are available for every track
- **CORRIDORS:** railway corridors RNE, TEN-T, EURO-ASIA



RailMap Web Services

Web services are focused on customers who monitor their objects on the railway by means of GPS technology.

