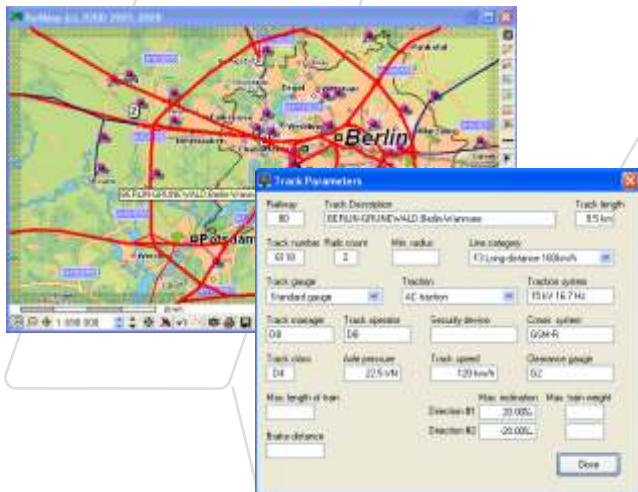


Railway Infrastructure

The European Database of Railway Infrastructure Parameters provides basic information on the parameters of the European railway tracks. The information is based on the national Network Statements issued by particular infrastructure managers.

The database contains information about infrastructure of all European countries (EU and non-EU countries) and Turkey. Data processing continues with the European part of CIS countries.



INFORMATION ON INFRASTRUCTURE

The information on infrastructure can be displayed in the RailMap application or as a module in the ERIC application. In the RailMap application the infrastructure is presented in the form of a network graph where the railway stations form the graph peaks and the railway tracks form the graph edges.

You can select an edge by clicking on it. There you can see the track parameters – the track number, the section length, the number of rail tracks, the traction system, track category, axle pressure, gauge, etc.

SEARCHING FOR OPTIMAL ROUTE

The network graph can help you to solve optimization problems, such as finding the shortest route on basis of given parameters.

The route can be found on basis of these parameters:

- type of traction (electric or motor traction)
- minimal track category
- restrictions – elimination of railway stations or tracks

PRICE CALCULATION FOR INFRASTRUCTURE USAGE

Using the information stated in a Network Statement you can calculate the maximum price for usage of railroad for the found route.

By the 1st of May 2010 the calculation is available for these countries: Germany, Austria, Poland, Hungary, Czech Republic, Slovakia, Bulgaria and Slovenia.

